



**NSDL**

Technology, Trust & Reach

# Product Suite



Agile



Innovative



Secure

Participant Services

# Benefits of NSDL YUP ( YUva Plan )

1. **Zero Settlement Fees for first 36 months from date of opening of New Demat Account.**
2. **An Investor (first holder) below the age of 24 years at the time of Account opening.**
3. **No upper cap on number of transactions.**
4. **Multiple Demat Accounts can be opened.**
5. **Accounts in joint holding are also eligible.**



***Start Early, Invest Smartly with YUP!***

# Ease of Integrations - API Basket

## Participants

- Account Opening API for Participants
- e-voting and IDeAS Integrations
- EPI API
- Client Maintenance

## Brokers

- e-Delivery Instructions Slip (eDIS) : Single, Multiple
- Margin Pledge Instruction (MPI) : API

## Value-Added Services

- DAN - Depository Account Validation
- Online Nomination
- Online Account Closure
- e-DAC - Insider Trading

## Banks and NBFCs

- NSDL Digital LAS for Demat account holders of NSDL
- NSDL Digital LAS for IPO Financing

## Mutual Fund

- Mutual Fund Redemption

# API for Business

## Account Opening API for Participants

- Facilitates instant demat account opening via NSDL Insta Interface.
- Activated accounts are updated in Local/Cloud DPM Systems.
- Supports joint holding & NRI account as well.

## File Upload API for Client Maintenance

Enables secure account creation/modification through encrypted and authenticated file uploads.

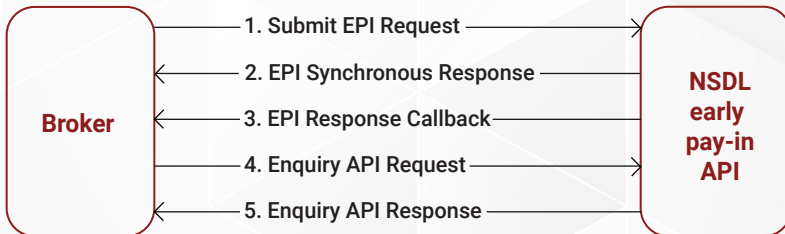
## Insta Demat Bank API

Bank-Based API: Provides real-time account opening via Partner Bank apps/websites.

# API for Business

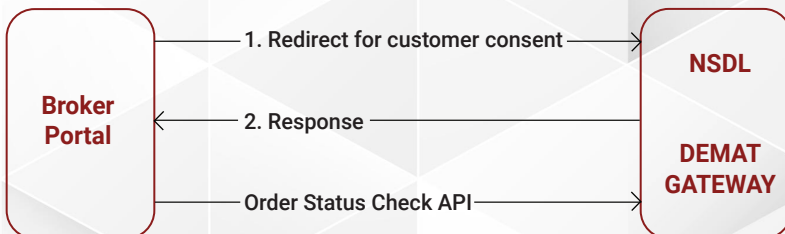
## Early Payin API (On market Account Transfer)

Enables Clearing Members to submit on-market account transfers for early pay-in via SPICE "Direct Facility."



## e-Delivery Instruction Slip (eDIS)

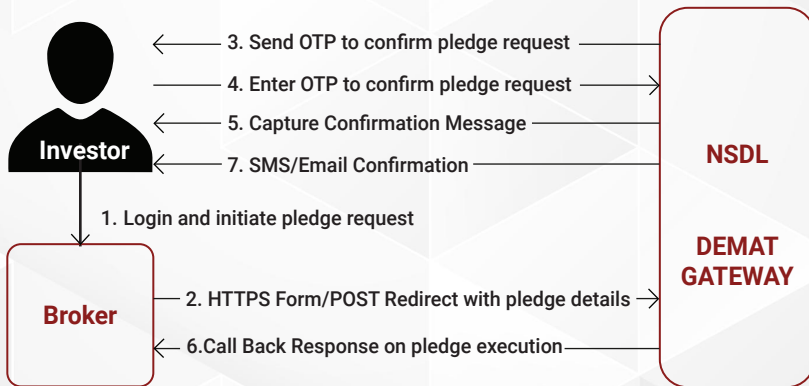
Allows client to authorize securities debit and transfer for trade obligations without requiring a Power of Attorney/DDPI.



# API for Business

## Margin pledge Instruction API

- **Online Clients:** Integrates brokers with NSDL Demat Gateway for margin pledge instructions by POA and non-POA clients.
- **Offline/Call and Trade:** Brokers initiate MPI for POA clients based on client instructions, with status updates provided to DPs.



## e-Voting and IDeAS Integrations

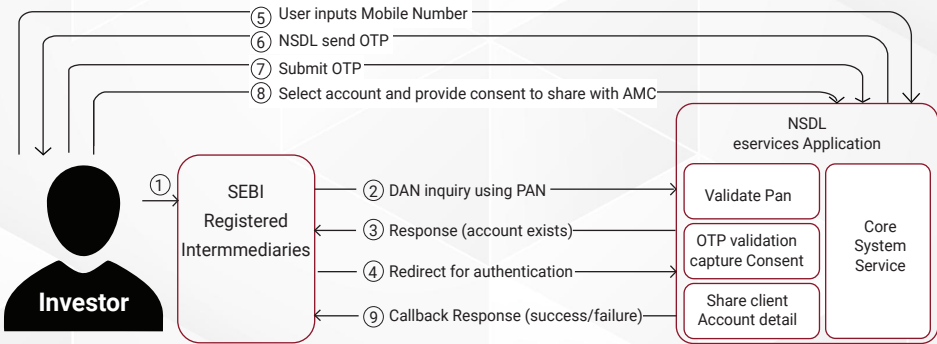
- Facilitates electronic voting for shareholders, mandatory for listed and unlisted companies having more than 1,000 shareholders since March 27, 2014.
- IDeAS is an API based integration that facilitates the end customers/ investors to access & download NSDL e-CAS , view transactions of last 30 days, view latest balances of the demat account, download 'Form 26AS' and access to e-voting facility.

# API for Business

## Depository Account Validation (DAN)

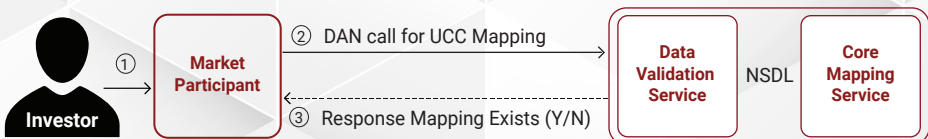
Real-time API enabling Demat Account Number inquiry using PAN, based on client consent captured via NSDL e-services portal.

### Transaction flow for NSDL DEMAT Account Number



## UCC Mapping Verification API

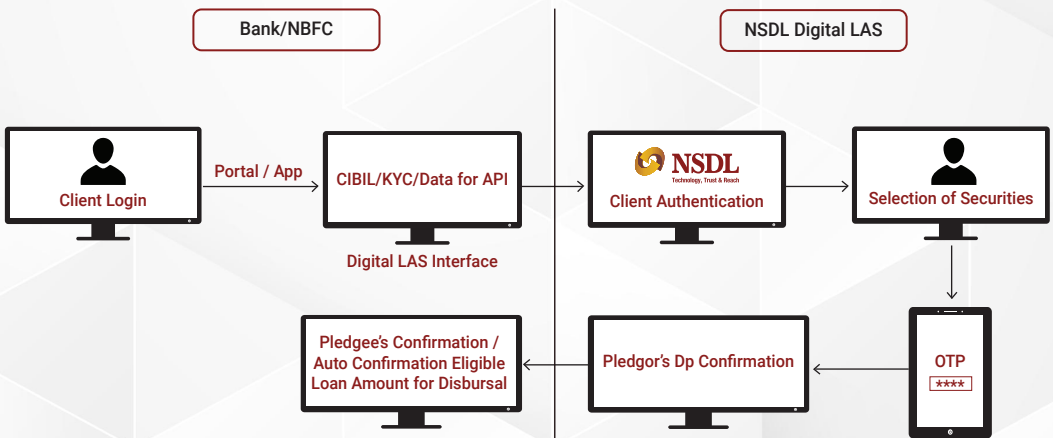
NSDL has developed an API service to check UCC seeding in demat accounts when clients attempt to trade through broking platform.



# API for Business

## NSDL's Digital LAS / Mutual Fund

- Product offered by Banks / NBFCs.
- Loan offered to clients by instantly pledging securities including Mutual Fund held in dematerialized form.
- Consumer (End Users) - All demat account holders of NSDL including in-house clients of Bank DPs



## Mutual Fund Redemption

Facilitates Mutual Fund unit redemption via DP's secured website or mobile app linked to NSDL Demat Gateway.

[product@nsdl.com](mailto:product@nsdl.com)

# Value Added Services

## Auto Download

Automates downloading of masters and exports available in the Local DPM System, there by reducing manual transfer of files.

## STP Navigator

Enables automatic transfer of instruction and client account files from back-office systems to eDPM/Local DPM via designated folders, eliminating manual effort.

## e-Signer

NSDL e-Signer facilitates Participants to digitally sign and encrypt the instruction files (generated from the back office system) to ensure secure transmission during the transition.

## Online Nomination

The existing demat account holder (applicable for single account holder) will have the ability to opt-in / opt-out of nomination in an online mode on NSDL web portal viz., <https://eservices.nsdl.com/instademmat-kyc-nomination/#/login>. Clients will be able to eSign the opt-in / opt-out of nomination declaration form.

# Value Added Services

## Online Account Closure

Online Account Closure facility has been provided for single as well as joint account holders in case of intra depository as well as inter depository transactions.

## E-DAC

NSDL provides periodic reports of employees' holdings of their demat accounts to Employer. The reports can be provided either for specific securities or for all the securities held by their employees in their demat accounts as required by the employer.

## Online Updation of Mail ID & Income Range

The existing demat account holders will have the ability to update/ modify email ID and / or income range in their demat accounts in an online mode on NSDL web portal viz., <https://eservices.ndl.com/kyc-attributes/#/login>. Post updation of the details, Clients will be able to eSign the request form.

# Features of NSDL SPEED-e For Broker

Holding Statement

Overdue Statement

Transaction File Download

ISIN Master Download

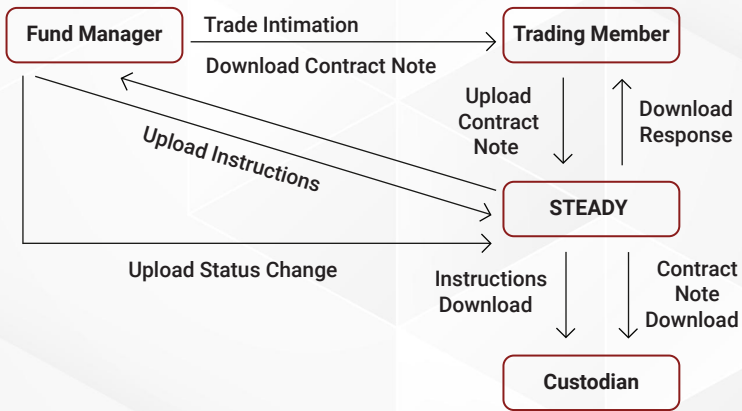
Spice Registration

Broker can submit instructions to CC and client

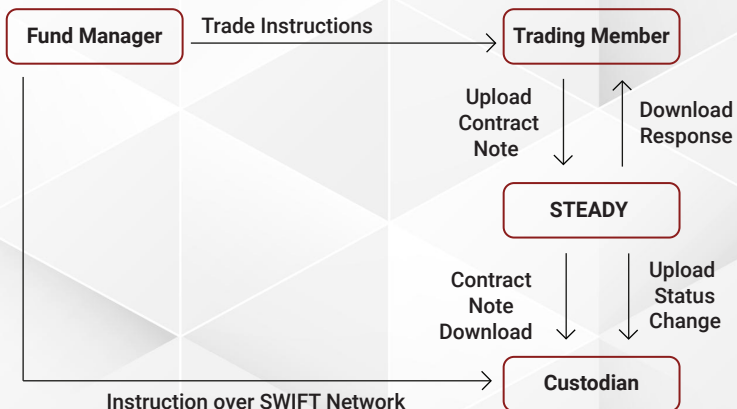
# NSDL STeADY Platform

STeADY is a platform (<https://eservices.nsd.com>) which facilitates exchange of information pertaining to securities trades in an electronic form amongst Brokers, Custodians and Fund Managers. All transmissions through STeADY are encrypted thus ensuring confidentiality and authorised by the sender using digital signature.

## Domestic Trades



## FIIs Trades



# NSDL's Consolidated Account Statement

Introduced through budget announcement in 2014.

Unique concept to show all investments held in dematerialized form in a client's portfolio at one place.

Includes investment in different securities across demat accounts at both NSDL & CDSL and mutual fund folios in statement of account form.

Latest portfolio composition and valuation.

Register your email ID at [www.nsdldcas.nsdld.com](http://www.nsdldcas.nsdld.com) to get eCAS regularly.

[nsdl-casfeedback@nsdl.com](mailto:nsdl-casfeedback@nsdl.com)

# Things To Know



## 1. Operational Ease with APIs

Do you know that NSDL offers a bouquet of restful message-based APIs, such as Early Payin, MF Redemption, Margin Pledge, and Insta Demat, designed to simplify your operations? These APIs are available to enhance your experience and streamline processes.

## 2. Client Master Report Access

Do you know that the NSDL Client Master Report is easily accessible on the NSDL SPEEDe App and the IDEAS facility? You can now view important client information at your fingertips, ensuring seamless access and management.

## 3. Automated Ticketing System

Do you know that NSDL has implemented an automated ticketing system for handling IT Helpdesk issues, Investor services, Participant services, and Surveillance? This system ensures faster resolution and smoother communication.

## 4. Dedicated Relationship Manager

Do you know that NSDL assigns a dedicated Relationship Manager to each Depository Participant (DP)? This personalized service is designed to provide tailored support and assist with your operational needs.

## 5. 24/7 Helpdesk Support

Do you know that NSDL Helpdesk support is available 24/7 through iAssist login? Whether you're dealing with technical issues or need assistance, help is always available, anytime, anywhere.

## 6. NPS Investment Visibility

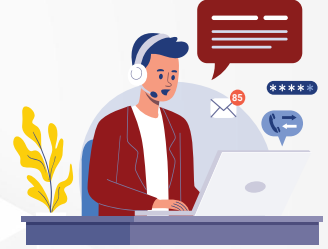
Do you know that your clients can now view their NPS investments in the NSDL Consolidated Account Statement (CAS)? This makes it easier for them to track their investments in one comprehensive report.

# Contact Us

## Email ID :

- DP Helpdesk
- Settlement
- Investor Services
- Participant Services
- Surveillance
- CAS related Billing
- Product related queries
- Speede related queries
- E-voting

Helpdesk@nsdl.com  
ccinterface@nsdl.com  
relations@nsdl.com  
Participant-Interface@nsdl.com  
surveillancecell@nsdl.com  
Casbilling@nsdl.com  
Product@nsdl.com  
Starcom\_Speed@nsdl.com  
evoting@nsdl.com



## Contact :

Reception - 022 6944 8400 / 8515



[www.nsdl.co.in](http://www.nsdl.co.in)

## NSDL Offices

### AHMEDABAD

Mr. Ishu Tayal  
9252037648

### BENGALURU

Mr. Supratim Mitra  
9830540075

### CHENNAI

Mr. Elango Sethuramalingam  
9840702999

### HYDERABAD

Mr. Swapneel Puppala  
8951022700

### INDORE

Mr. Shubham Manethiya  
9993974604

### JAIPUR

Mr. Kartik Sharma  
7014264686

### KOCHI

Mr. Jiyas J A  
9895509411

### KOLKATA

Mr. Vikram Jha  
8334810007

### LUCKNOW

Mr. Kaushal Kumar  
9918374333

### MUMBAI

Mr. Sachin Tripathi  
9984875444

### NEW DELHI

Mr. Sachin Utreja  
9810582999

Follow us :





**Head Office Mumbai**

## **National Securities Depository Limited**

3rd Floor, Naman Chambers, Plot C-32, G-Block, Bandra Kurla Complex, Bandra East,  
Mumbai, Maharashtra - 400 051.